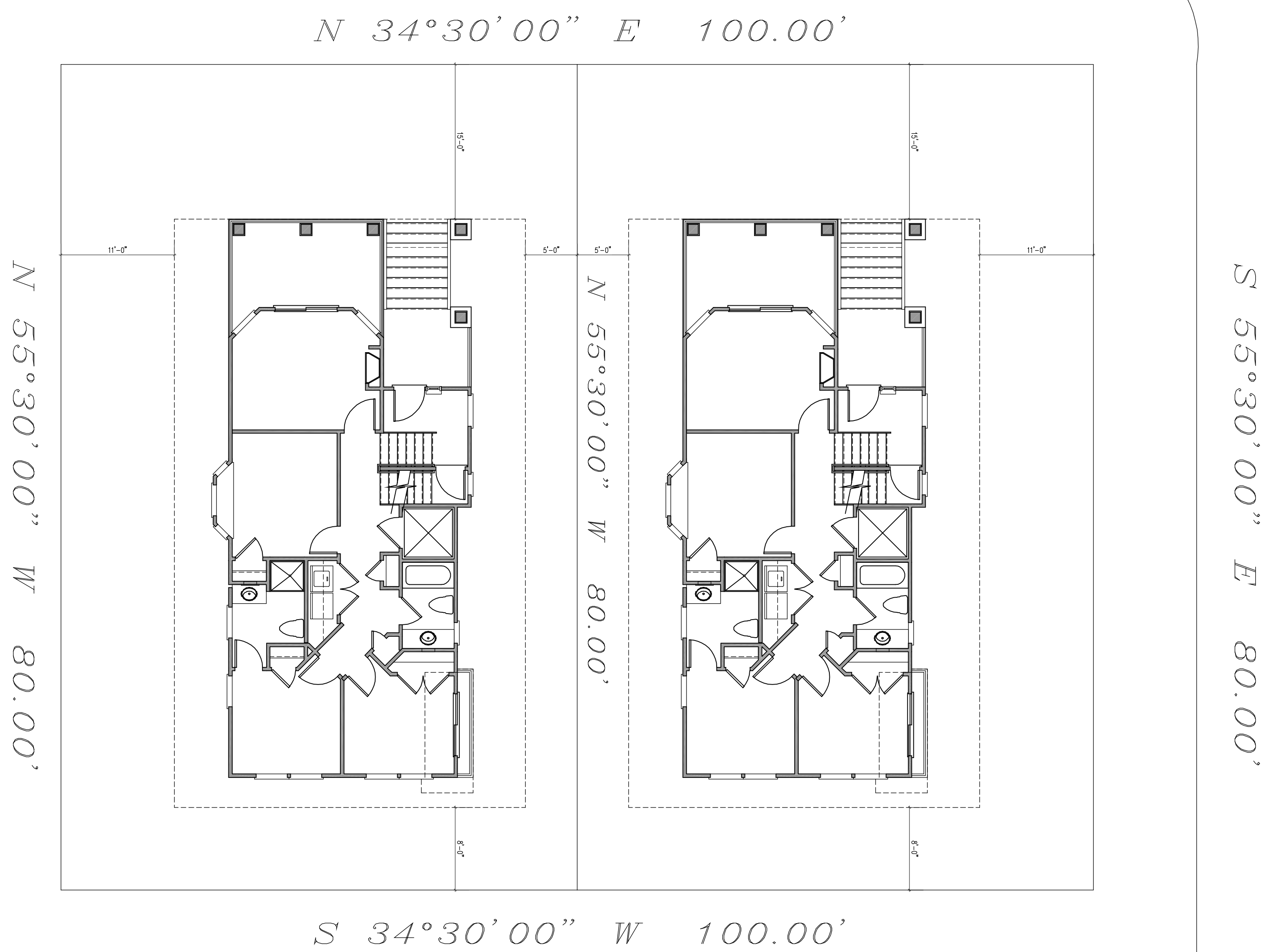
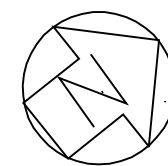


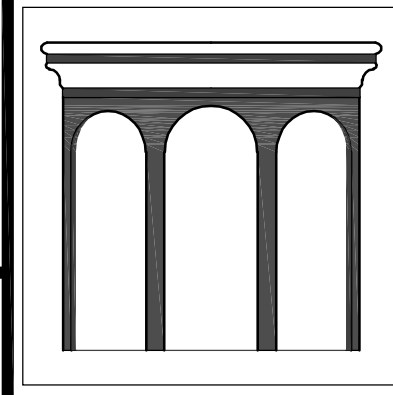
BAY AVENUE (100')



FIFTH STREET (80')

STUDIO
TAGLAND
DESIGNS LLC

3 WEST DELAWARE, BEACH HAVEN TERRACE, NJ 08008 (609) 361-8128
WWW.STUDIOTAGLANDDESIGNS.COM
NEW JERSEY STATE BOARD OF ARCHITECTS AUTHORIZATION NUMBER: AC-957



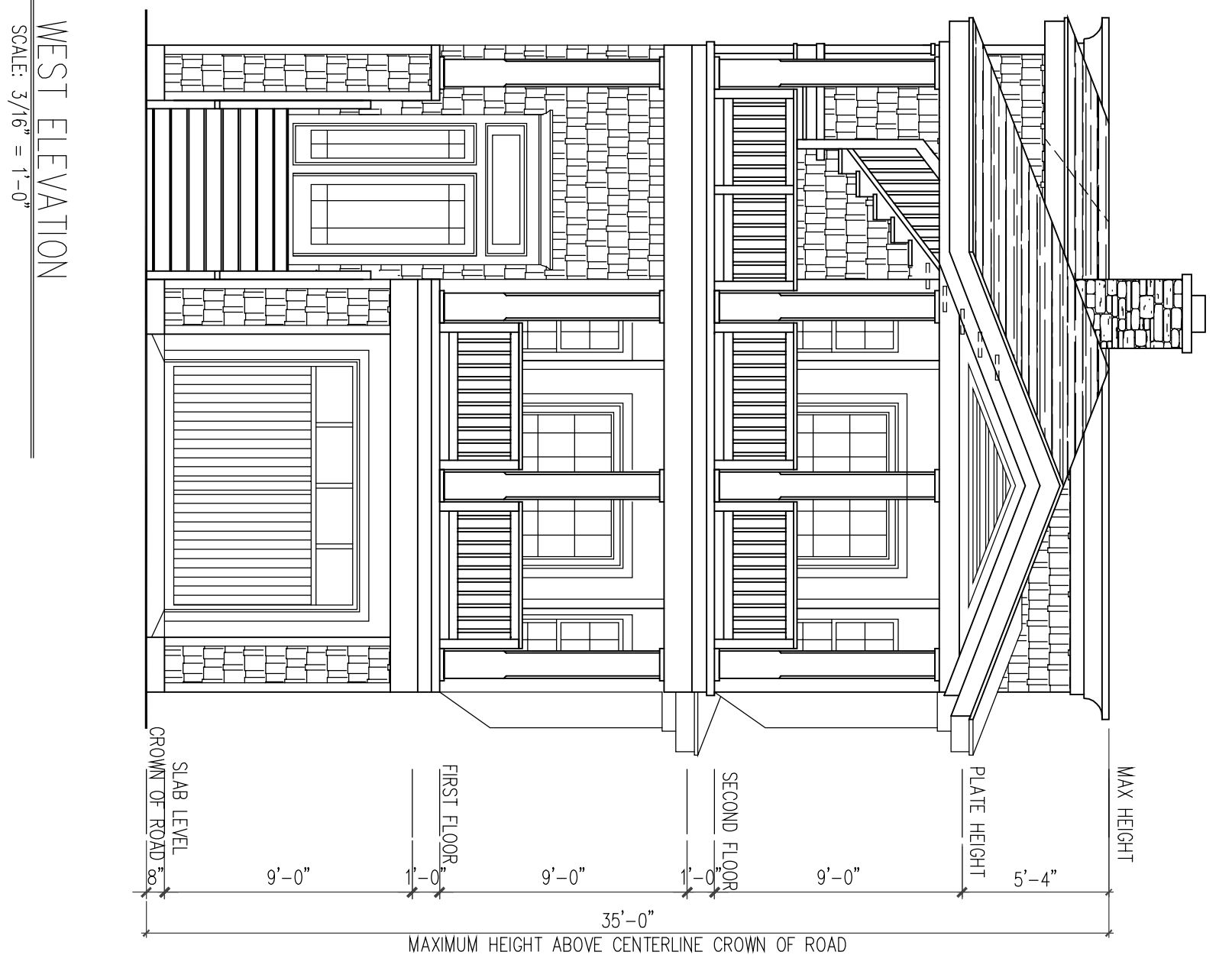
DAVID A. GAFFIN
ARCHITECT

NJ REG: A1 15796

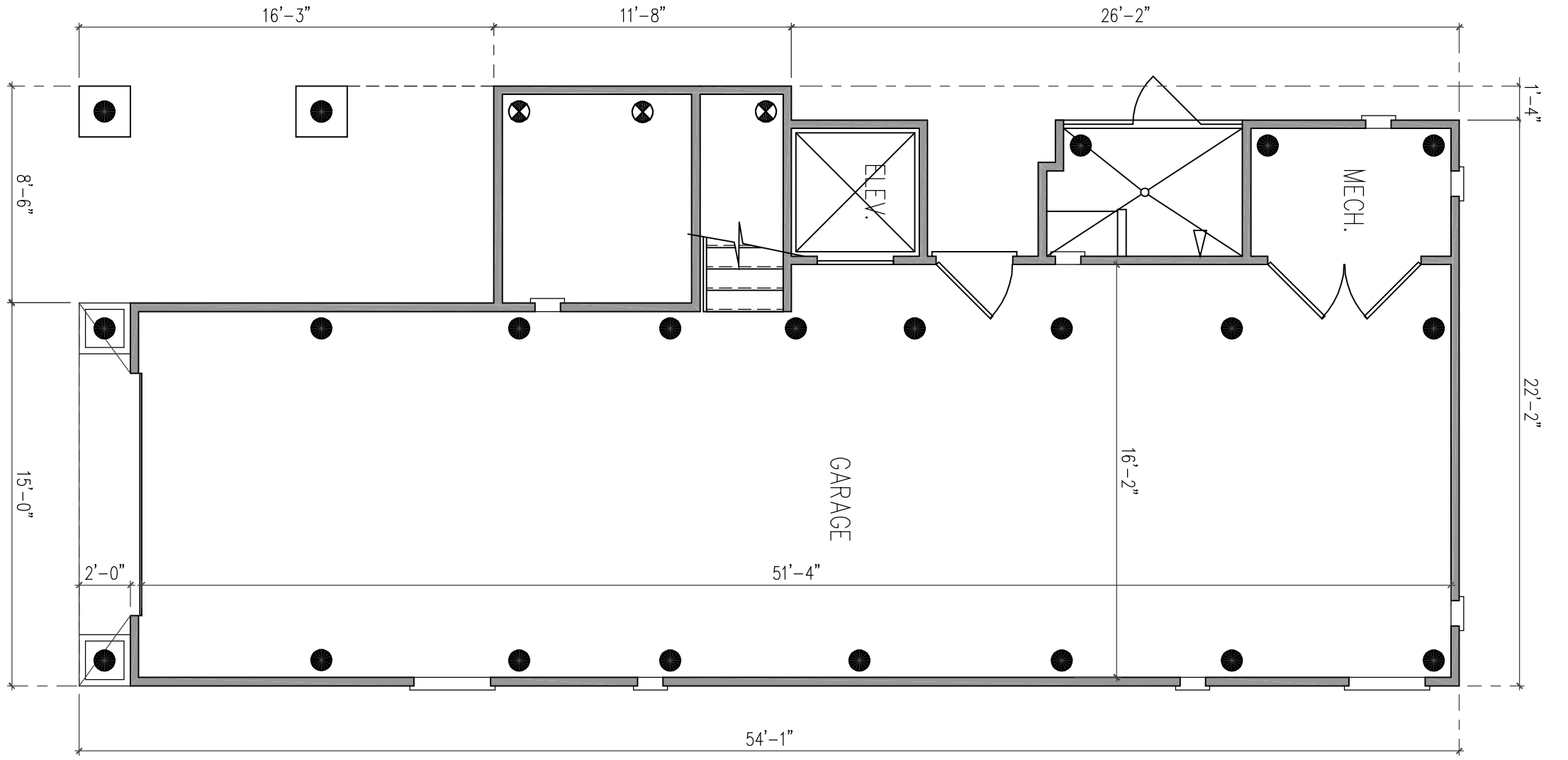
PROPOSED SUBDIVISION
LOTS 2.01 & 2.02 BLOCK 170
BOROUGH OF BEACH HAVEN
OCEAN COUNTY, NJ
APPLICANT: JOHN BRENNAN

SITE LAYOUT

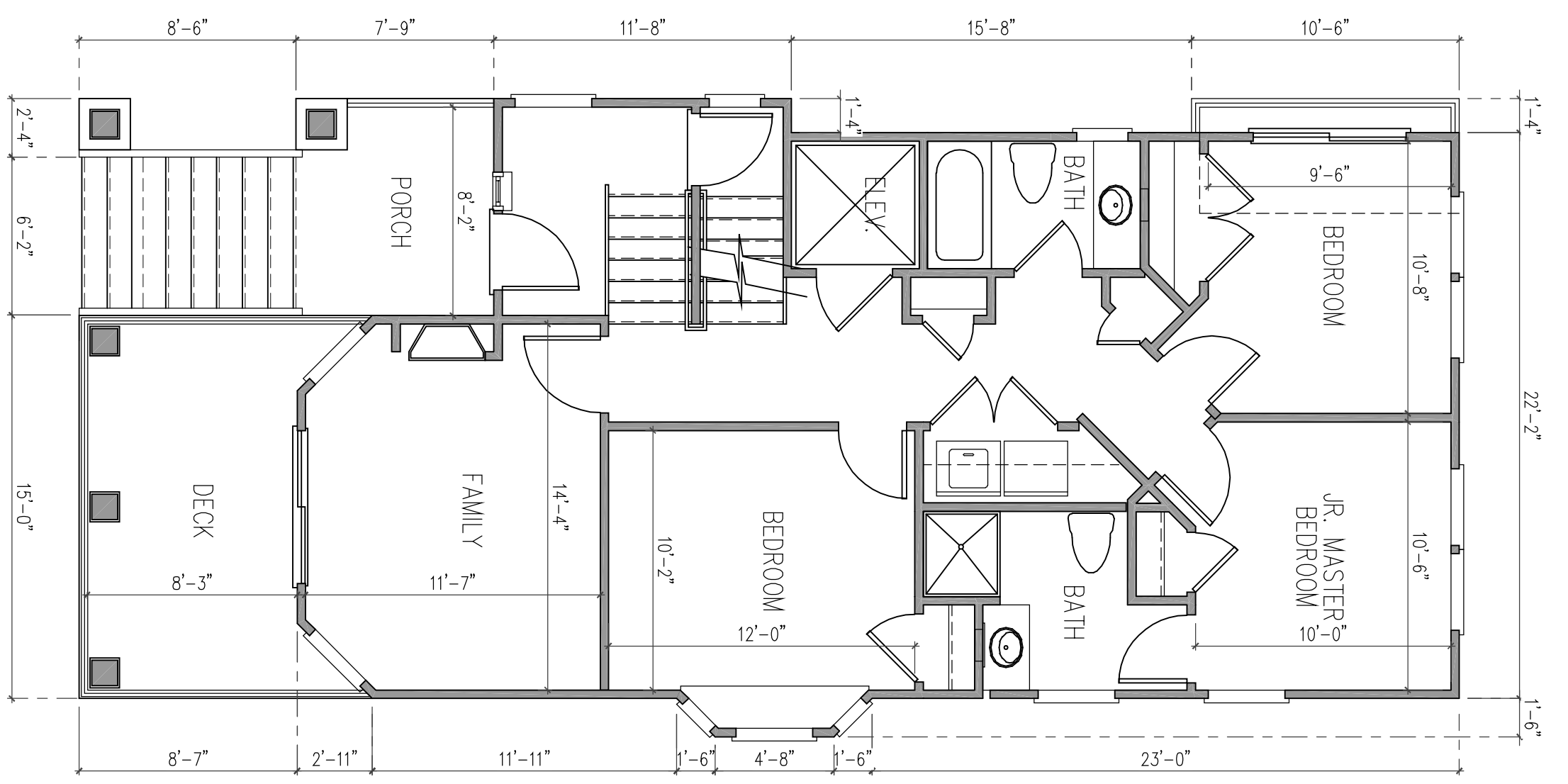
SCALE: 1/8" = 1'-0"	APPROVED BY	DRAWN BY DAG
DATE: 9/2/20		CHECKED BY
REVISION:		
		DRAWING NUMBER A-1



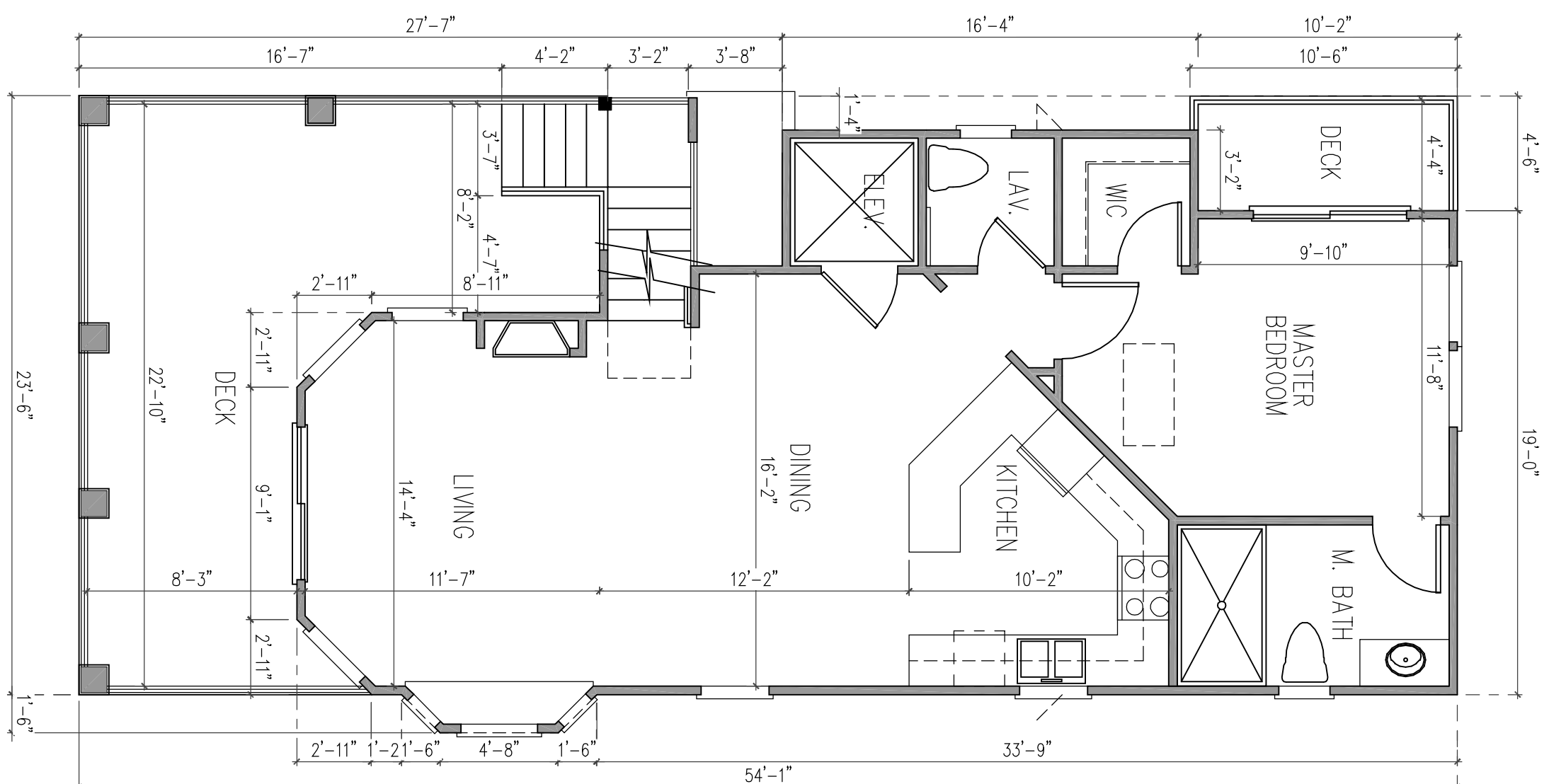
WEST ELEVATION
SCALE: 3/16" = 1'-0"



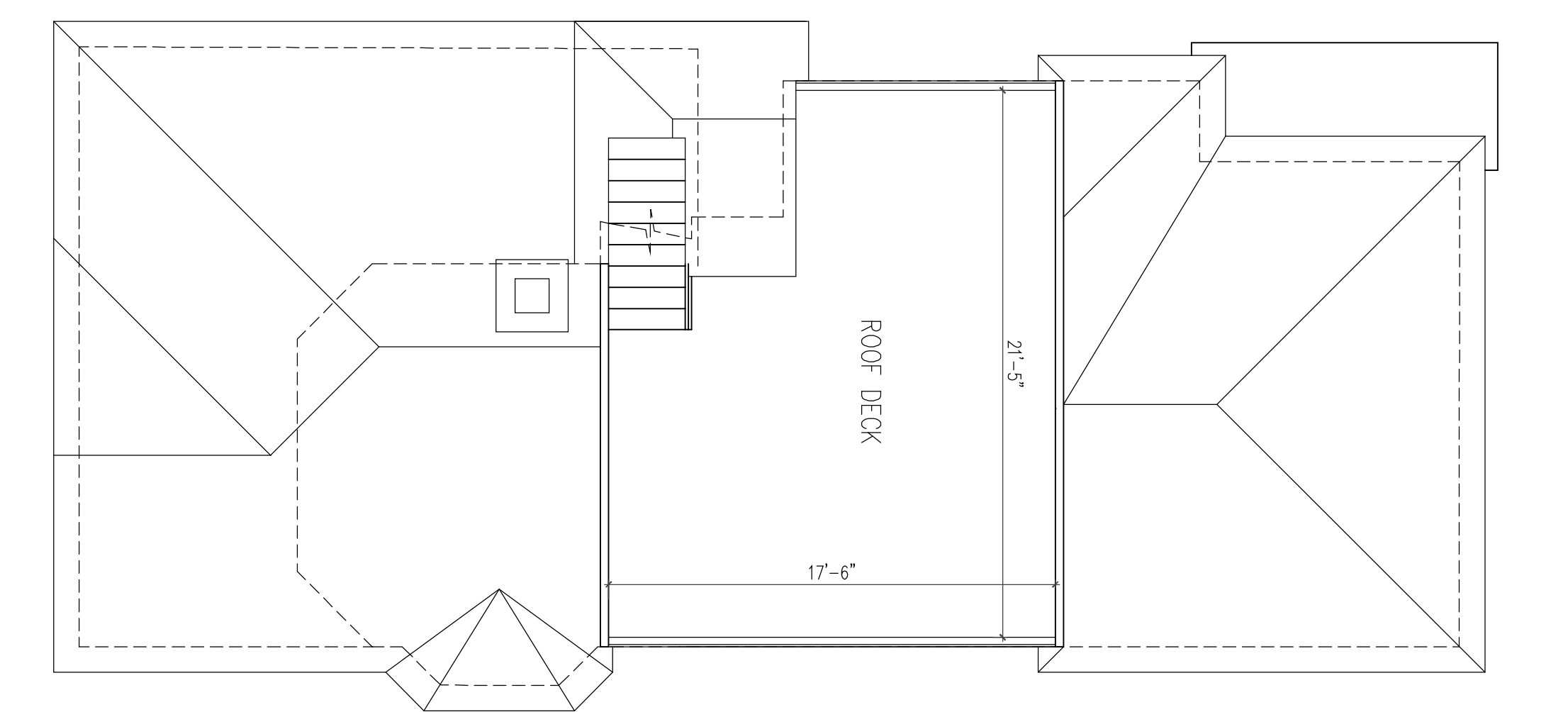
GROUND ENCLOSURE PLAN
SCALE: 3/16" = 1'-0"



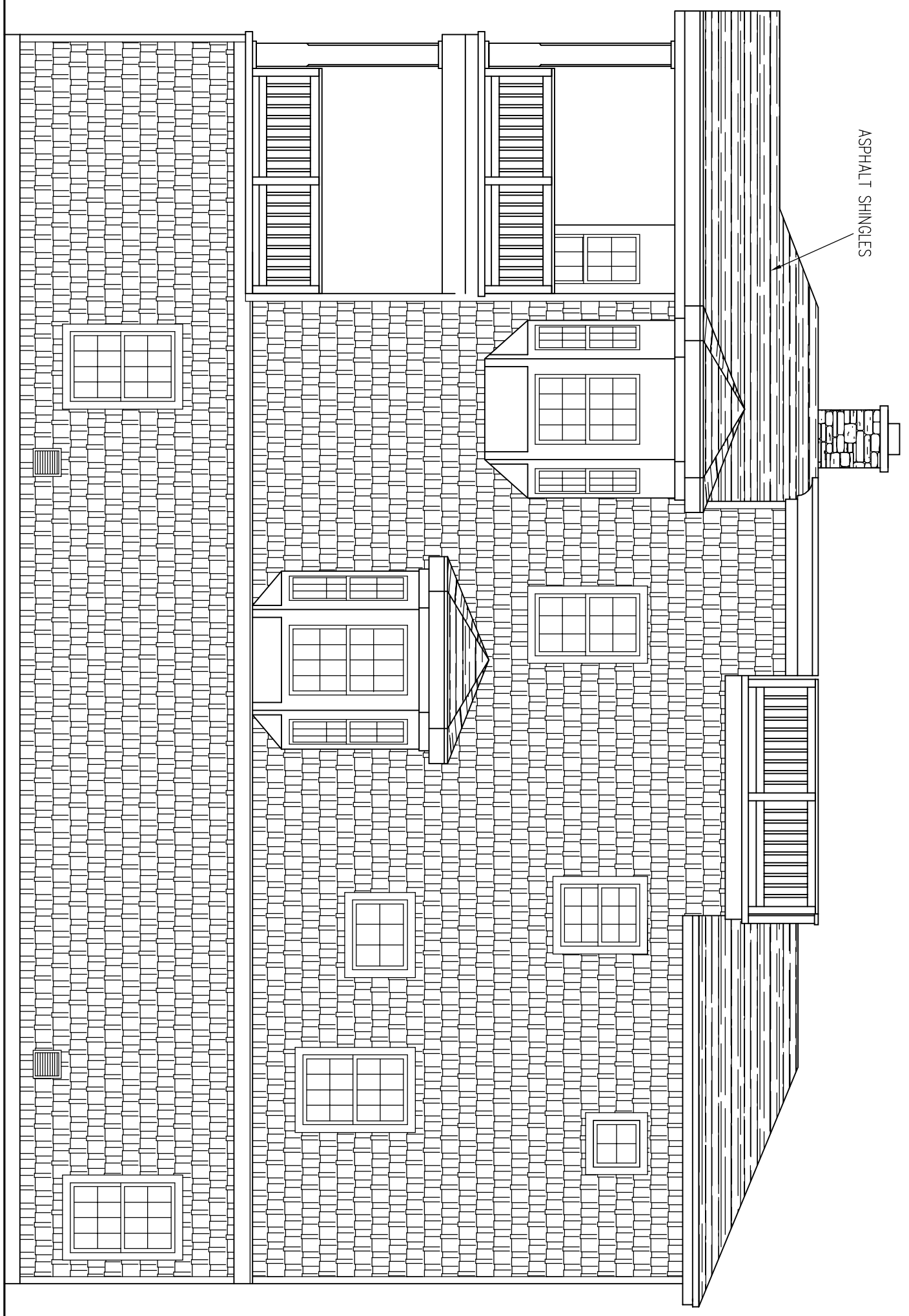
FIRST FLOOR PLAN
SCALE: 3/16" = 1'-0"



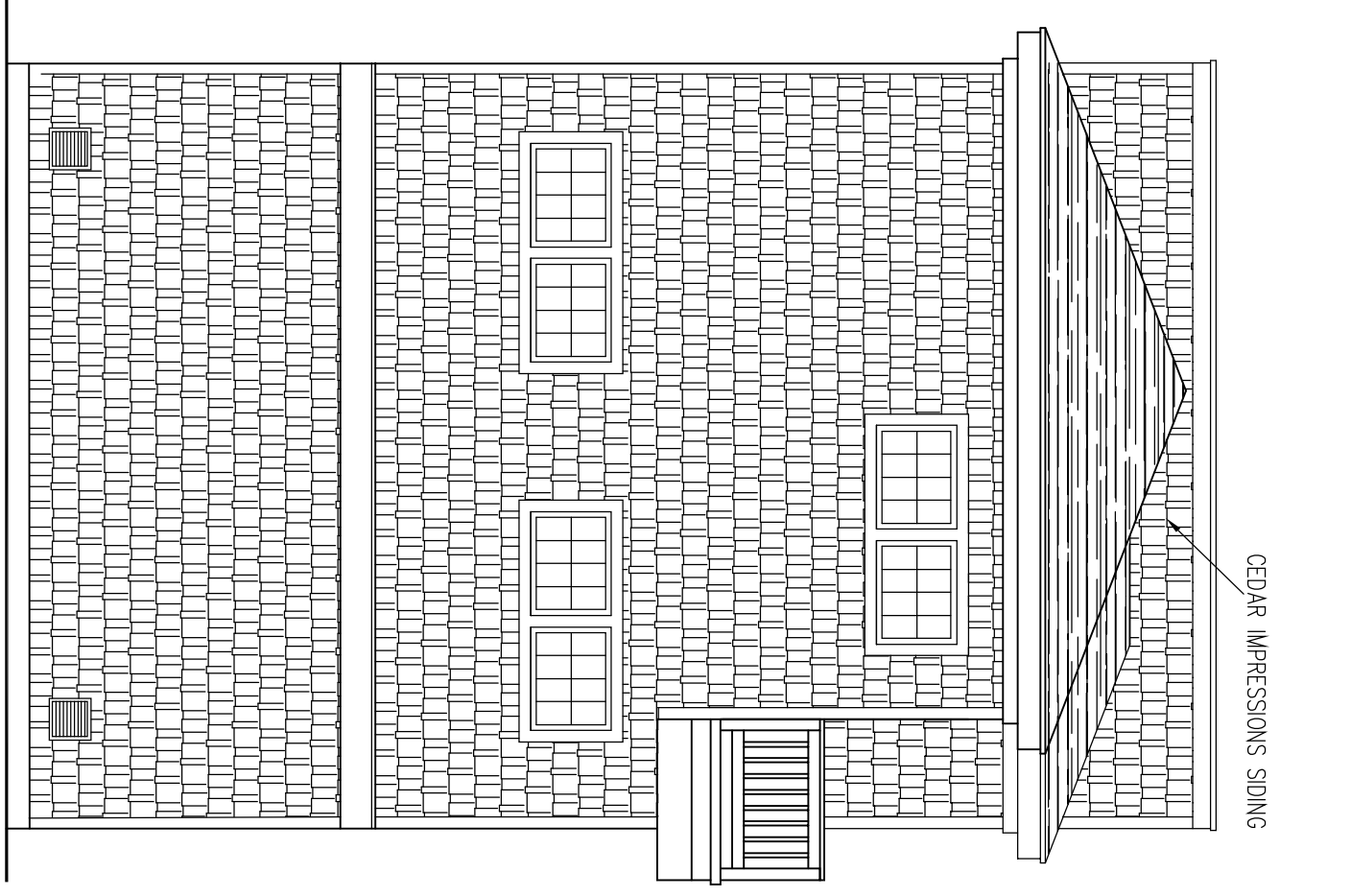
SECOND FLOOR PLAN
SCALE: 3/16" = 1'-0"



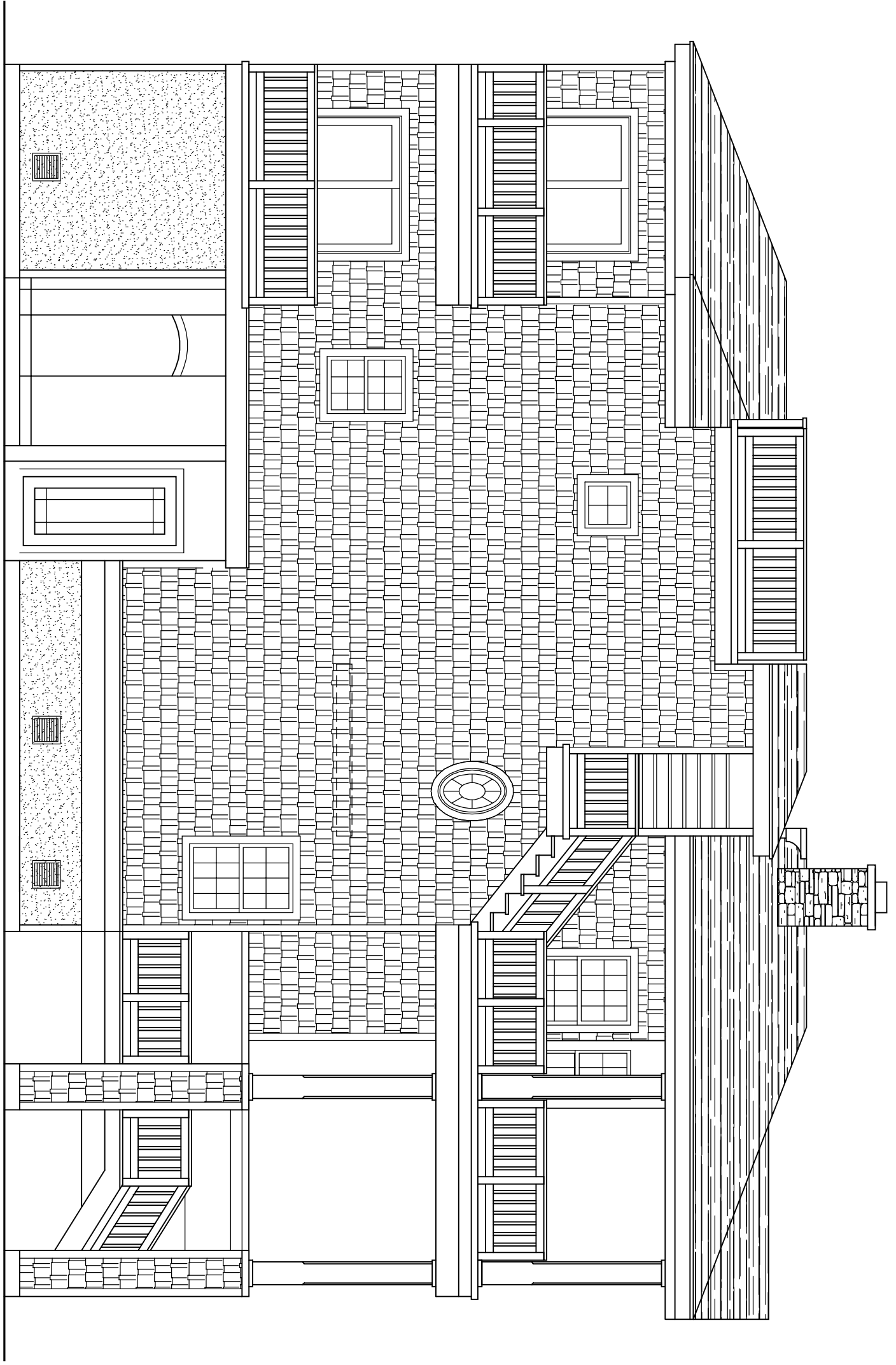
ROOF PLAN
SCALE: 3/16" = 1'-0"



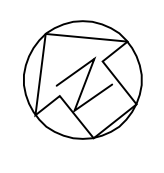
SOUTH ELEVATION
SCALE: 3/16" = 1'-0"



EAST ELEVATION
SCALE: 3/16" = 1'-0"

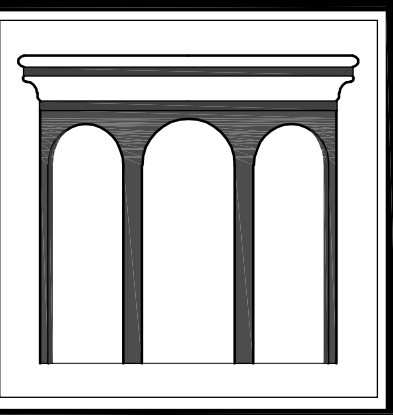


NORTH ELEVATION
SCALE: 3/16" = 1'-0"



STUDIO TAGLAND
DESIGNS LLC

3 WEST DELAWARE, BEACH HAVEN TERRACE, NJ 08008 (609) 361-8128
WWW.STUDIOTAGLANDDESIGNS.COM
NEW JERSEY STATE BOARD OF ARCHITECTS AUTHORIZATION NUMBER: AC-957



DAVID A. GAFFIN
ARCHITECT

David A. Gaffin

NJ REG: A1 15796

PROPOSED SUBDIVISION
LOTS 2.01 & 2.02 BLOCK 170
BOROUGH OF BEACH HAVEN
OCEAN COUNTY, NJ
APPLICANT: JOHN BRENNAN

LOT 2.01 PLANS & ELEVATIONS

SCALE: 3/16" = 1'-0"	APPROVED BY	DRAWN BY: DAG
DATE: 9/2/20		CHECKED BY
REVISION:		
		DRAWING NUMBER: A-2

